

Canon

imagePROGRAF®
WB400 / WB400



GRAPHIC ARTS
SYSTEMS



imagePROGRAF®
W6400 / W8400

GRAPHIC ARTS SYSTEMS

CANON IS COMMITTED TO LARGE-FORMAT PRINTING TECHNOLOGY

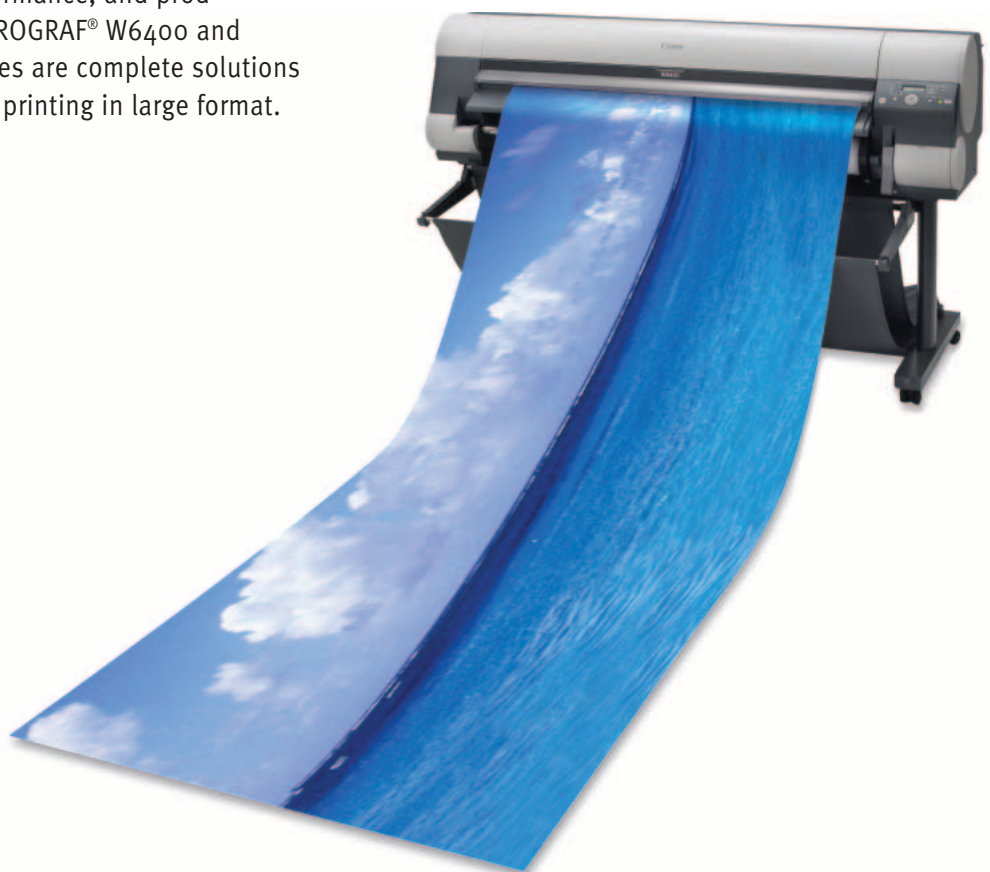
A world leader in office imaging systems, ink-jet technology, and digital photography, Canon presents a breakthrough in professional, large-format printing solutions.

Canon, one of the world's top patent holders, introduces the next level of large-format printing. With a powerful suite of diverse software programs, advanced functionality, performance, and productivity features, the imagePROGRAF® W6400 and imagePROGRAF W8400 devices are complete solutions for creating, processing, and printing in large format.

Office Environments – The user-friendly software programs, simplified operating features, and ready integration with Canon office imaging systems make large-format printing simple.

Photo Professionals – The color management and print utilities help facilitate the processing and printing of high-quality, highly durable, color-accurate images.

Graphic Arts Professionals – A versatile, high-speed printer is combined with software tools to deliver the efficient production of output used in a wide variety of applications.



A COMPLETE WORKFLOW SOLUTION

The imagePROGRAF W6400 and imagePROGRAF W8400 printer systems include the tools needed to *create, process, and print* professional, large-format output.

Put Ideas to Paper with a Powerful Suite of Standard Software Programs.

Design and customize posters, signs, banners, and more with a robust suite of software specially created by Canon for large-format printing. Edit and organize digital photography with a photo printing utility from one of the world's leading digital camera companies. Manage large graphic files efficiently, and interface with office imaging equipment with PhotoPRINT™ Select, an Adobe® PostScript® 3™ software RIP.

Generate Exceptional Quality Output with the Speed You Expect From an imagePROGRAF Printer.

The imagePROGRAF W6400/W8400 printers, with Canon's proprietary print head technology, enable high-speed printing at 2400 x 1200 dpi, with precise 4pl ink droplets for high image resolution, clarity, and detail. A six-color pigment ink set with interchangeable black inks produces a broad and realistic color gamut. A wide variety of media is available for applications, including posters, banners, backlit displays, photographs, fine art reproductions, and much more.

Create



Design, customize, edit, and lay out large-format images

Process

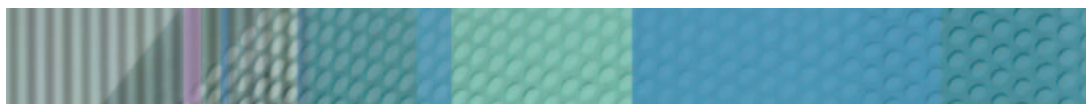


Efficient and accurate image management

Print



High-quality, long-lasting prints at ultra-fast speeds



EVERYTHING CORPORATE PROFESSIONALS, EDUCATORS, IN-PLANT MANAGERS, OR ANY OTHER USER NEEDS TO PRODUCE LARGE-FORMAT PRINTS

Retail sales promotions, customer presentations, new product designs, and legal graphics are just some projects that are extremely time-sensitive. The imagePROGRAF W6400/W8400 printers help provide a complete workflow solution that allows for a fast response in *creating, processing, and printing* large-format output.

Poster Creation Made Simple

Design, customize, and print posters, banners, and signs with Canon's new poster-making software. With step-by-step instructions, PosterArtist—an included template-based software—will make creating large-format posters simple. The program includes over 175 pre-designed templates that can be easily tailored, plus it allows for the creation of customized posters.

Not Just a One-Dimensional Device

The imagePROGRAF W6400 and imagePROGRAF W8400 models are more than just the sum of their parts. With an abundance of both hardware and software features, including an HDI driver to print AutoCAD® files, 2400 x 1200 dpi for photo output, and a diverse array of software application programs, these printers will open up new

areas of large-format printing. Canon has put these tools together to help provide for a start-to-finish solution for large-format users.

Technology that Works with You

The ability to integrate large-format printing with existing office imaging systems is now possible with Canon's latest imagePROGRAF printing solutions. The included PhotoPRINT Select software RIP will help create a seamless workflow that effortlessly interfaces with Canon Color imageRUNNER® imaging systems for automatic enlargement printing. Also included is the imagePROGRAF Printer Driver 2005, which offers users the comfortable feel of other Canon drivers while providing all the tools necessary for an easy, out-of-the-box path to printing.





Hardware That's Not Hard to Use

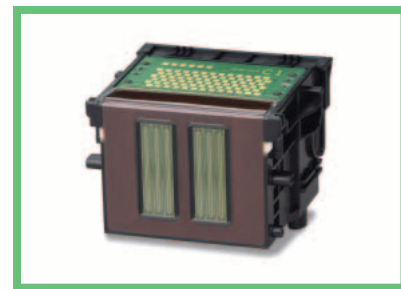
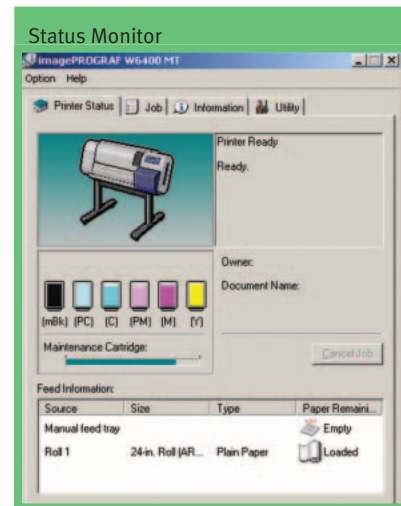
The new imagePROGRAF W6400 and imagePROGRAF W8400 models have been designed with the user in mind. Operator-friendly features such as a newly designed user interface, enhanced status monitor, simple paper-loading system, and a stylish, compact design help make the imagePROGRAF printers efficient and easy to use.

Speed Without Sacrifice

High-speed imagePROGRAF printers are the result of Canon "Know How," providing high-quality color prints quickly and easily. A new high-speed controller was developed with a single-chip design to facilitate rapid processing times. Combining Canon's new high-density print head and photolithographic processes with semiconductor exposure systems, this technology, known as FINE, helps enable the printing of high-resolution images at remarkable print speeds.

The Right Media for the Right Job

A highly versatile solution, the imagePROGRAF W6400/W8400 printers allow users to choose from a wide array of media types, including photo paper, vinyl, glossy, proofing, and matte-coated papers. These output options help you to produce enlargements, signs, banners, presentation material, and more. Marrying Canon Specialty Media with its exclusively formulated Pg, pigmented ink will provide correctly profiled output that's vibrant, colorful, and long-lasting.



*Please see Product Specifications page for a list of all operating system requirements.

PROFESSIONAL PHOTOGRAPHIC OUTPUT WITH A SYSTEM SO ADVANCED, IT'S SIMPLE.

A Start to Finish Workflow Solution

Canon, a leader in digital photography, has assembled the essential tools and technologies for producing professional, long-lasting large-format output. Photographs and fine art images can be produced with clarity and detail. High-resolution 2400 x 1200 dpi printing, true 1200-dpi pitch, precise 4pl ink droplets, and a matte black ink are just part of what Canon can deliver. These features, combined with the included software applications, have made Canon an ideal choice for the photography industry.

A Picture is More Than Just a Print

The imagePROGRAF printing systems will be able to interface with digital camera files, like those taken from the Canon EOS® or PowerShot™ cameras, for a start-to-finish workflow solution. Canon's new photo software solutions include tools for editing, layout, and an array of other features to create the ideal image. Digital Photo Print Pro (DPPP), designed by Canon to edit and manage digital photos for professional large-format layouts and prints, includes tools to help eliminate redden, improve skin tones, remove moiré, and make image corrections to digital photos.

Photoshop Users Can Expect More

Now Adobe Photoshop® users can easily integrate DPPP into their photo management workflow for on-demand photo prints. Canon provides the ability for two-way communication between DPPP and Photoshop, thus allowing for the exchange of digital images between programs, even after they've been modified. Print Plug-In for Photoshop, a professional software, helps enable 16-bit processing of images with 10-bit printing, without giving up the ability to work within Photoshop. The Plug-In also features support for custom ICC profiles, Dynamic Print Preview with Print Color Simulation, in both PC and MAC environments.



FOR LARGE-FORMAT PRINTERS, CAPABILITY MEANS OPPORTUNITY

Not Business As Usual

Growing demand for point-of-purchase displays, signage, trade show graphics, and banners means that there has never been a better time for large-format printing. In today's ever-changing business environment, it's no longer good enough to just "keep up with the competition." The imagePROGRAF W6400/W8400 printing solutions are the next step in the evolution of large-format printing. Canon has created a versatile system that's loaded with robust software applications and is simple and efficient to operate. This workflow solution provides the tools necessary to create, process, and print large-format output.



Improve Productivity Across Your Workflow

Canon has integrated into the imagePROGRAF printers the latest technological advances in both hardware and software, far exceeding today's expectations. With Canon's proprietary 7,680-nozzle, one-inch print head with FINE technology, a new high-speed controller, and a collection of software programs, the ability to create, process, and print has never been easier or more affordable.

Doing a Job Right the First Time—Every Time

Creating accurate prints from various PostScript software applications is now a part of the imagePROGRAF solution. Canon has included PhotoPRINT Select, a software RIP with Adobe PostScript 3 support, and features such as ICC profile color matching and a PANTONE® color library to produce prints that are faithful to the original. Processing and printing are made simple with six configurable print queues.



imagePROGRAF W6400/W8400 Specifications

Print Head

- Bubble Jet On-demand/FINE
- End-User Replaceable (BC-1350)
- 6-Color Print Head*

Number of Nozzles

- 1,280 Nozzles per Color
- 7,680 Nozzles, Total

Droplet Size

- 4 Picoliter

Nozzle Pitch (Head Resolution)

- 1200 dpi

Print Resolution (Max.)

- 2400 x 1200 dpi

Ink Tank

- Cyan, Magenta, Yellow, Black,* Matte Black,* Photo Cyan, Photo Magenta

Ink Capacity

imagePROGRAF W6400: 130ml
imagePROGRAF W8400: 330ml

Ink Types

- Pg Ink (Pigment-based)

Nozzle Recovery System

- Non-firing Nozzle Detection and Compensation

Media Feed

imagePROGRAF W6400

- Roll
 - One Roll, Rear-loading, Front Output
- Cut Sheet
 - One Sheet, Front-loading, Front Output

imagePROGRAF W8400

- Roll
 - One Roll, Front-loading, Front Output
- Cut Sheet
 - One Sheet, Front-loading, Front Output

Media Type Modes

- Paper
 - Plain Paper, Coated Paper, Heavyweight Coated Paper, Extra Heavyweight Coated Paper, Proofing Paper, Colored Coated Paper, CAD Plain Paper, CAD Tracing Paper
- Photo
 - Glossy Photo Paper, Semi-glossy Photo Paper, Heavyweight Glossy Photo Paper, Heavyweight Semi-glossy Photo Paper
- Film/Synthetic
 - Synthetic Paper, Adhesive Synthetic Paper, Back Light Film, Flame Resistant Cloth, CAD Translucent Matte Film
- Fine Art
 - Fine Art Photo Paper, Fine Art Heavyweight Photo Paper, Fine Art Textured Paper, Canvas Matte, Japanese Paper Washi

Media Width

imagePROGRAF W6400: 8 - 24"
imagePROGRAF W8400: 8 - 44"

Maximum Print Length

imagePROGRAF W6400

- Roll: 59 Feet (18 Meters)
- Cut Sheet: 55.1" (1400mm)

imagePROGRAF W8400

- Roll: 59 Feet (18 Meters)
- Cut Sheet: 63.0" (1600mm)

Media Thickness

0.07 - 0.8 mm (2.7 mil - 31.4 mil)

Margins

- Roll: All Sides: 0.20" (5mm)
- Cut Sheet: Leading and Left/Right Edges: 0.20" (5mm); Trailing Edge: 0.90" (23mm)

Maximum Media Roll Diameter

- 5.9" (150mm)

Borderless Printing Width (Roll Media Only)

imagePROGRAF W6400

- 10", 14", 16", 24", 515mm (JIS B2), 594mm (ISO A1)

imagePROGRAF W8400

- 10", 14", 16", 24", 36", 42", 594mm (ISO A1), 840mm (ISO A0), 515mm (JIS B2), 1030mm (JIS B0)

Bundled Software

- Printing Software
 - Printer Driver 2005, Print Plug-in for Photoshop, HDI Driver for AutoCAD
- Applications
 - PosterArtist,** Digital Photo Print Pro***
- Software RIP
 - PhotoPRINT Select for imagePROGRAF (Adobe PostScript 3)

Languages

- Printer
 - GARO (Canon Proprietary)
- via Software RIP
 - PostScript, PDF 1.4, EPS, TIFF, JPEG, BMP

Operating System

- Driver†
 - Windows® 98/Me, Windows NT® 4.0 SP6/2000/Xp/2003 Server, Macintosh® OS 8.6/9/X
- Software RIP
 - Windows 2000/XP, Macintosh OS X††

Interface

- Standard
 - USB 2.0 High Speed
 - 10/100 Base-T/TX
- Optional
 - IEEE1394 FireWire Card (10/100Base-T/TX Card must be uninstalled)

Acoustic Noise

imagePROGRAF W6400

- Operation: 50dB or Less
- Standby: 35dB or Less

imagePROGRAF W8400

- Operation: 54dB or Less
- Standby: 35dB or Less

Power Supply

- Input Power: AC 100–240V (50-60Hz)
- Power Consumption
 - Maximum: 160W or Less
 - Standby: 6W or Less

Certifications

- UL®, FCC Class B, ENERGY STAR®

Operational Environment

- Temperature: 59 – 86 F° (15 – 30 C°)
- Humidity: RH 10 - 80 % (No condensation)

Dimensions (with Stand)

imagePROGRAF W6400: 47.3" x 29.6" x 43.2" (1200mm x 752mm x 1097mm)

imagePROGRAF W8400: 64.6" x 38.2" x 42.3" (1642mm x 972mm x 1075mm)

Weight (with Stand)

imagePROGRAF W6400: 108 lb. (49kg)

imagePROGRAF W8400: 216 lb. (98kg)

User-Replaceable Items

- Print Head
- Maintenance Cartridge
- Cutter Blade

Print Speed	Mode	Resolution	W6400 W8400		Standard with the Printer
			Square Feet Per Hour		
Plain Paper	Draft	1200 x 1200	250	307	Printer Stand Basket 2" Core Media Spool Print Head 7 Ink Tanks (C, M, Y, K, PC, PM, MK) Maintenance Cartridge Power Cord Cutter Blade User Software CD (Printer Driver, Print Plug-in for Photoshop, HDI Driver, Utilities) Application CDs (PosterArtist, Digital Photo Print Pro) Software RIP CD (PhotoPRINT Select for imagePROGRAF) User Guide CD Setup Guide (Poster) Printer Reference Guide (Booklet) Hardware (for setting up the stand) Ethernet Card USB 2.0 High-Speed Interface
	Standard	1200 x 1200	103	117	
Heavyweight Coated Paper	Draft	1200 x 1200	158	182	
	Standard	1200 x 1200	102	118	
	High	2400 x 1200	44	52	
Glossy Photo Paper	Standard	1200 x 1200	79	91	
	High	2400 x 1200	44	52	
	Highest	2400 x 1200	22	26	

Printed Image: ISO JIS-SCID No. 5 Chart
Printed Image Size: W6400: 23.6 x 29.5" (599 x 749mm); W8400: 43.6 x 54.5" (1107 x 1384mm)
Test Environment: Pentium® 4/3.2GHz, Windows XP SP2, 1024MB RAM, USB 2.0 High Speed, Adobe Photoshop 7.0
Square Feet Per Hour does not include data transfer time and time for media cutting. The test conducted here is a result of Canon Inc.'s internal testing. The actual print speed varies, depending on number of factors including data size, data complexity, application software, and interface.

* Select regular black or matte black; interchangeable.
** Windows 98/Me/2000/XP only
*** Windows 2000/XP only
† For imagePROGRAF Printer Driver 2005. For printing from PostScript application (such as Adobe Illustrator® or QuarkXPress®), use PhotoPRINT Select for imagePROGRAF software RIP.
†† Available 3Q, 2005

© 2005 Canon U.S.A., Inc. All rights reserved.

As an ENERGY STAR® Partner, Canon U.S.A., Inc. has determined that these products meet the ENERGY STAR® guidelines for energy efficiency. ENERGY STAR and the ENERGY STAR certification mark are registered U.S. marks. Adobe, PostScript, Photoshop, and Illustrator are registered trademarks of Adobe Systems Incorporated in the United States and/or other countries. AutoCAD is a registered trademark of Autodesk, Inc. in the United States. PhotoPRINT is a trademark of Scanvec Amiable, Inc. PANTONE is a registered trademark of Pantone, Inc. Windows and Windows NT are registered trademarks of Microsoft Corporation in the United States and/or other countries. Macintosh is a registered trademark of Apple Computer, Inc. QuarkXPress is a trademark of Quark, Inc. and all applicable affiliated companies, Reg. U.S. Pat. and Tm. Off. and in many other countries. UL is a registered trademark of Underwriter's Laboratories Inc. Pentium is a registered trademark of Intel Corporation. Canon, IMAGEPROGRAF, IMAGERUNNER, EOS, PowerShot, and Canon Know How are registered trademarks, and the Genuine logo is a trademark of Canon Inc. in the United States and may also be registered trademarks or trademarks in other countries. IMAGEANYWARE is a service mark of Canon U.S.A., Inc. in the United States. All referenced product names and other marks are trademarks of their respective owners.

Specifications subject to change without notice.
All output images are simulated.

0052W027

0505-6400/8400-15M-ATM



1-800-OK-CANON
www.usa.canon.com

Canon U.S.A., Inc.
One Canon Plaza
Lake Success, NY 11042